

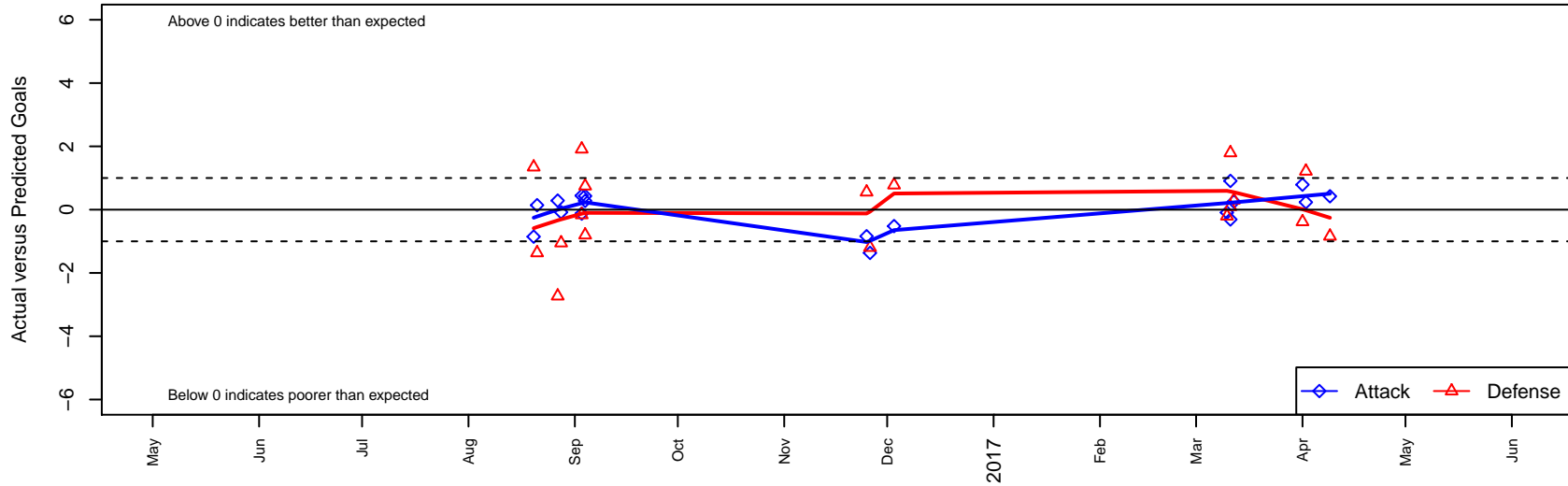
Anaheim FC PDA B01

, CAS
 B01 total strength=1805
 attack=41.65 defense=25.45

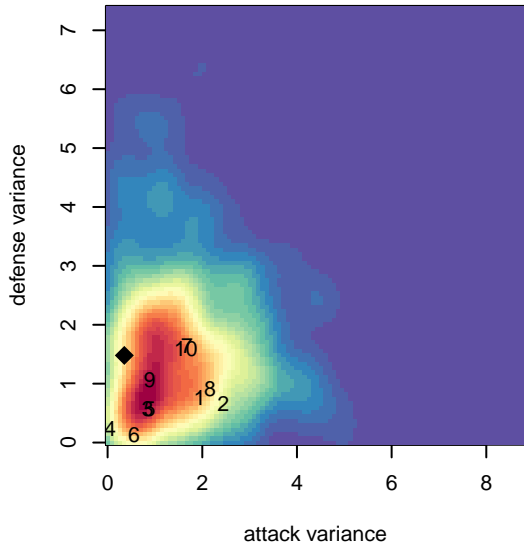
alt names used:
 Anaheim FC PDA B2001
 ANAHEIM FC PDA B2001 (CAS)
 ANAHEIM FC PDA B2001
 ANAHEIM FC PDA B2001 (CAS)

Venues played:
 2016 FWRL CAS B01
 2016 NHB Cup Flight 1
 2016 Surf College Showcase Super White U16
 2016 NV Players Showcase Bellagio U16

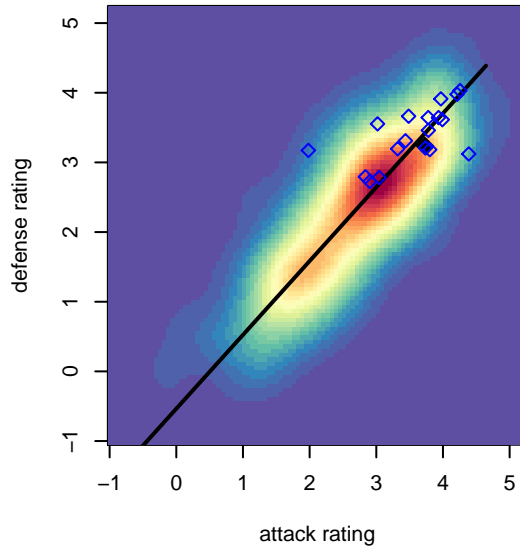
Anaheim FC PDA B01
 Dots are actual minus expected GF (blue circles) and GA (red triangles).
 Blue line is smoothed change in attack strength. Red is smoothed change in defense strength.



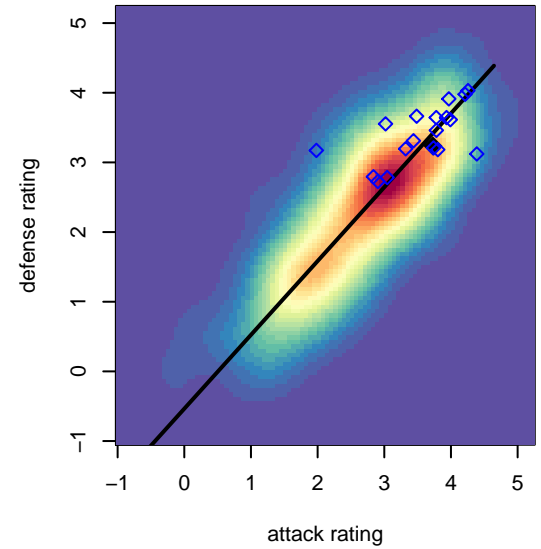
**attack and defense variance (black dot)
relative to other teams
and top 10 in region**



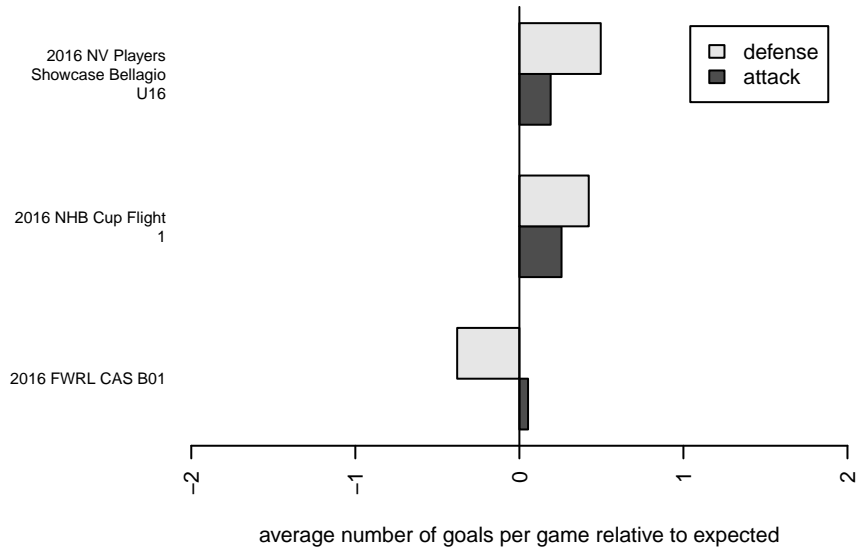
**attack and defense rating
relative to others at age
and all opponents in last 13 months**



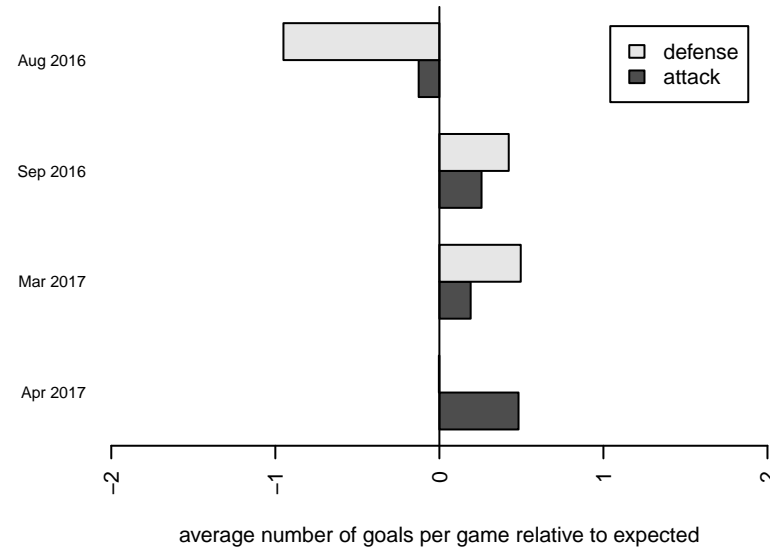
**attack and defense rating
relative to others at age
and all opponents in last 13 months**



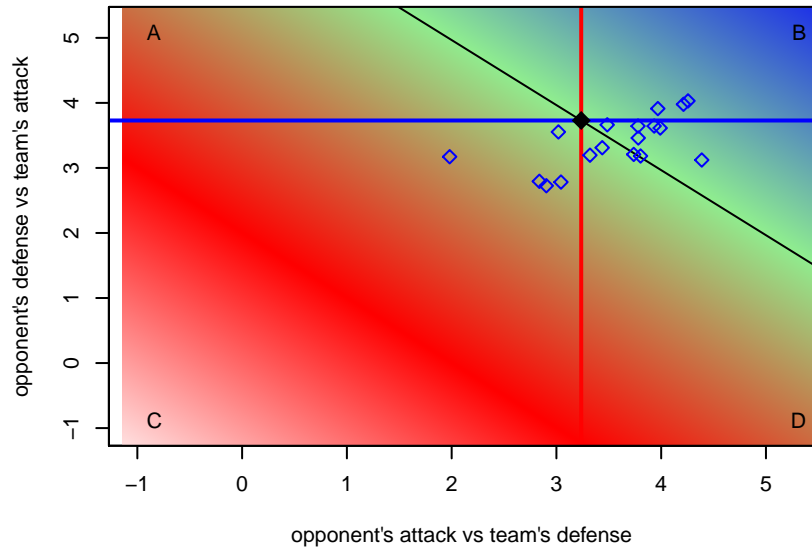
Performance relative to 13 month average



Performance relative to 13 month average



Distribution of opponents
 Red = Lose zone, Blue = Win zone, Green = Even
 Black line separates win/lose zones



lot. A=Neither has attack advantage, B=Opponent has both attack and defense advantage, C=Opponent has both attack and defense disadvantage, D=Both have

date	home		away		venue	pred.home	pred.aw
7-04-09	Anaheim FC PDA B01	2	FRAM Premier B01	2	2016 FWRL CAS B01	1.58	1.16
7-04-02	FC Golden State Academy B01	2	Anaheim FC PDA B01	2	2016 FWRL CAS B01	3.21	1.77
7-04-01	LA Galaxy San Diego Elite B01	2	Anaheim FC PDA B01	2	2016 FWRL CAS B01	1.62	1.21
7-03-12	Anaheim FC PDA B01	2	Davis Legacy White B01	0	2016 NV Players Showcase Bellagio U16	1.75	0.30
7-03-11	Anaheim FC PDA B01	1	SMC Star Academy B01	0	2016 NV Players Showcase Bellagio U16	1.31	1.80
7-03-11	Iowa ODP B01	2	Anaheim FC PDA B01	2	2016 NV Players Showcase Bellagio U16	2.09	1.09
7-03-10	Palo Alto SC Blue B01	2	Anaheim FC PDA B01	1	2016 NV Players Showcase Bellagio U16	1.80	1.09
6-12-03	Anaheim FC PDA B01	1	La Esperanza B01	1	2016 FWRL CAS B01	1.52	1.78
6-11-26	ISC Gunners A B01	2	Anaheim FC PDA B01	1	2016 Surf College Showcase Super White U	0.80	2.37
6-11-25	Anaheim FC PDA B01	0	Crossfire Premier A B01	1	2016 Surf College Showcase Super White U	0.84	1.55
6-09-04	Anaheim FC PDA B01	3	La Roca Futbol Club A0 B01	0	2016 NHB Cup Flight 1	2.57	0.75
6-09-04	Anaheim FC PDA B01	1	TFA FC Los Angeles B01	3	2016 NHB Cup Flight 1	0.72	2.20
6-09-03	Los Angeles United FA Academy USSDA B01	1	Anaheim FC PDA B01	1	2016 NHB Cup Flight 1	0.84	1.12
6-09-03	Anaheim FC PDA B01	2	Strikers FC SB Black B01	0	2016 NHB Cup Flight 1	1.56	1.91
6-08-28	Anaheim FC PDA B01	2	Oxnard PAL Blue B01	2	2016 FWRL CAS B01	2.08	0.95
6-08-27	San Diego Surf SC Academy I B01	6	Anaheim FC PDA B01	1	2016 FWRL CAS B01	3.27	0.71
6-08-21	Albion SC Academy B01	4	Anaheim FC PDA B01	1	2016 FWRL CAS B01	2.64	0.86
6-08-20	West Coast FC B01	1	Anaheim FC PDA B01	0	2016 FWRL CAS B01	2.35	0.85